



THREAD CUTTER WITH MANUAL RESET 470-2.08.01

Application

For use with practically all textile machinery for the purpose of separating and clamping the yarn.

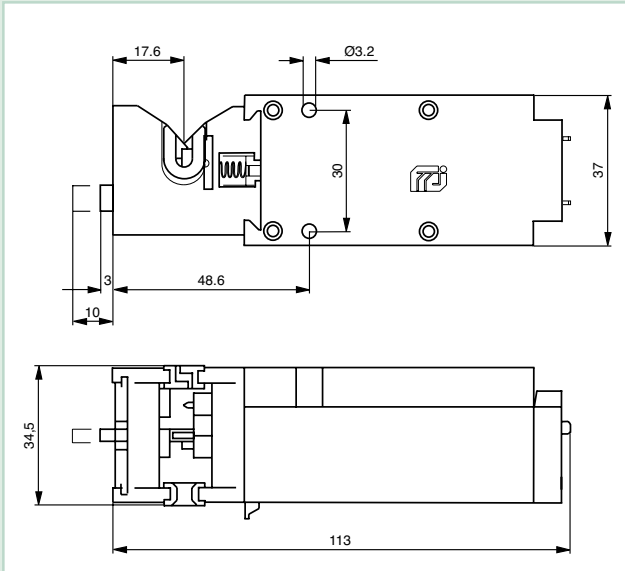
Function

A current pulse or continuous current results in the inserted yarn being cut. At the same time, the thread end that is facing the supply reel is clamped.

When the device is in the triggered state, the solenoid coil is automatically isolated from the electrical supply. The thread cutter is reset to the starting position manually.

The electrical connection is established using a 2.8 x 0.8 tab connector. The device can be used in conjunction with thread monitors 435-08.021 and 435-08.022.

Dimensions [mm]



Technical data

Operating voltage	24 VDC
Power consumption	max. 15 W
Cutting capacity	max. 3000 dTex
Clamping (thread tensile force)	max. 50 mN
Switching current	0.7 A

Versions

- Numerous versions with different thread running properties and/or ceramics are available.

How the thread runs

