

## DITEGO COMBI TRACTION SWITCH

The unique DITEGO combi traction switch combines all the main tiller head functions in one unit: Besides the typical traction switch functions (travel speed and travel direction), it also includes the horn button and the body protection switch as well as digital lifting/lowering. The DITEGO is used in the TEMO RIDER tiller head and also lends itself to customer-specific tiller head solutions.

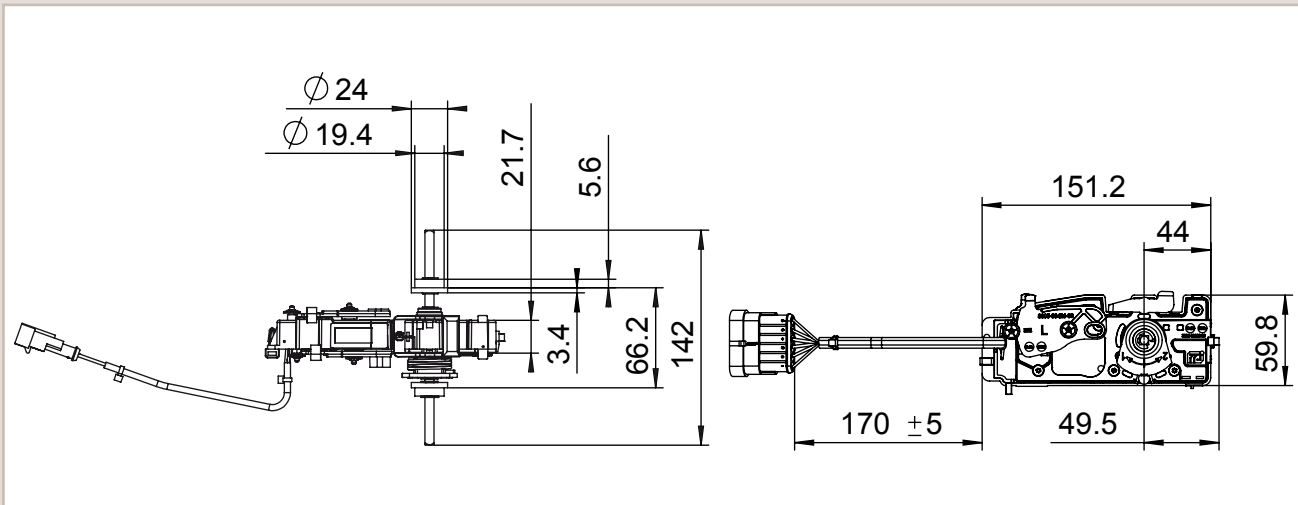
- Integration of the tiller head functions travel, horn, lifting/lowering and body protection switch
- Non-contacting Hall-effect technology for all functions
- CANopen interface
- 6 mm square shaft; the shaft length can be specified by the customer
- Protection class: IP 68
- Ideal for the design of customer-specific tiller heads

# Traction switch



www.frei.de

## Dimensions [mm]



Technical data	
Technology	Contactless via Hall sensors
Mechanical data	
Dimensions	See technical drawing
Mechanical angle of rotation	± 45°
Actuation	Square axle of size 6 x 6 mm
Cable and plug-in connector	AMP Superseal 6-pos., 1.5 Series (282108-01)
Electrical data	
Voltage supply (U <sub>b</sub> )	+9 V ... +40 VDC
Power consumption	50 mA
Interface / protocol	CAN / CANopen
Operating conditions	
Operating temperature range	-30 °C ...+63 °C
Max. actuation force	12 Nm
Service life	
Emergency reverse button	1 million cycles
Throttle axis	2 million cycles
Raise / lower	1 million cycles
Horn	1 million cycles
Vibration test / shock	DIN EN 60068-2-6/27/29
EMC	DIN EN 12895
Protection class according to EN 60529	IP 68

Versions	
Customer-specific modifications are possible with an appropriate purchase	

Order data	
Part No.	Designation
3203-00493-XX	The DITEGO traction switch is configured in a customer-specific manner

Connector pin assignment	
PIN number	Role
PIN 1	VBAT
PIN 2	GND
PIN 3	CAN high
PIN 4	CAN low
PIN 5	NC
PIN 6	NC